



Model 300F & 300SSF Water Distillation System Instruction Manual

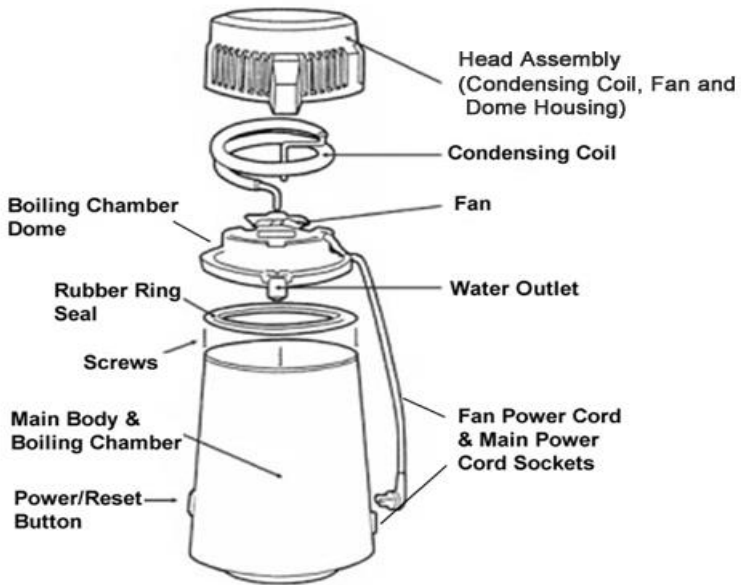


Thank you for purchasing an H2oLabs Water Distillation System.
You'll soon be making the **PUREST** water you can drink.

PLEASE READ THIS INSTRUCTION MANUAL
for a quick, easy and enjoyable water making experience.

DO NOT DISCARD SHIPPING BOX OR STYROFOAM until all
parts are located. (Glass Carafe is shipped inside the main unit.)

PARTS



Not Shown Above:

Glass Collection/Serving Carafe and related parts, (Shipped inside unit.)

Nozzle with Glass Insert

Activated Carbon Pods (6 pack)

Main Power Cord

PACKAGE INCLUDES:

Water Distillation Unit, (Head and Body Assemblies. See above.)

Glass Carafe, (Inside unit. **See Carafe Instructions before removing**)

Nozzle with Glass Insert, (Shipped inside Glass Carafe)

Main Power Cord (Inside Styrofoam packaging)

Activated Carbon Pods (6 pack) (Inside Styrofoam packaging)

Scale Cleaner Crystals (Inside Styrofoam packaging)

Instruction Manual

Please remove top of unit, and also check inside both sides of Styrofoam packaging to locate all parts listed above.

SAFETY INSTRUCTIONS - Read Before Operating

SCALDING DANGER!

- ▲ Do not allow children or disabled people to operate the unit or come in close proximity of it or the power cord.
- ▲ Never remove the top of the distiller when it is on or for at least 30 minutes after it has turned off. Always allow the unit to cool before removing the top of the unit to avoid potential hot water or steam injury.
- ▲ Do not allow any cord to hang over the counter which could get tangled or caught resulting in the unit being pulled off of the countertop.
- ▲ Always operate the unit on a dry, flat, heat-tolerant surface, out of the reach of children.

ELECTRICAL PRECAUTIONS:

- ▲ To avoid the risk of arcing or shorting, when connecting the Fan and Main Power Cords, always plug in the Main Power Cord to the wall outlet LAST. When disconnecting the Fan and Main Power Cords, always unplug the Main Power Cord from the wall outlet FIRST.
- ▲ Push plugs firmly all the way into the sockets to avoid a poor connection that could result in arcing.
- ▲ Do not share the same outlet with other high-wattage appliances while operating in order to prevent overloading.
- ▲ Always unplug the Main Power Cord before filling or cleaning the unit or whenever not in use.
- ▲ Do not use extension cords unless absolutely necessary. However, use of a power strip to protect against lightning strikes and power surges is acceptable.
- ▲ Never immerse any part of the unit in water, (except Carafe), and keep the outside of the unit and plug sockets dry.
- ▲ The unit turns off automatically upon completion. If you must stop the process early, flip the main power switch to off, (“O” position.)
- ▲ Do not attempt to make any repairs to the unit. It should be repaired only by an electrical appliance repair shop.

Quick Start Instructions:

Making your own pure distilled water is easy as 1, 2, 3!

Don't let this detailed Instruction Manual discourage you. We try to explain everything possible so there is no guess work about the best way to set up and operate your distiller. But it is actually very easy to use.

After assembling the carafe and giving everything a quick cleaning, here's all you do:

- #1-Fill boiling tank with water to the indented line and replace top;
- #2-Position the collection carafe under the distilled water outlet;
- #3-Push the On/Reset button when you are ready. That's it!

In less time than it takes to prepare a coffee maker, you will be making the very purest water you can drink. For more details and information about your distiller, read this Instruction Manual to discover shortcuts to make your water distillation experience even easier and more enjoyable.

SAFETY INSTRUCTIONS - Read Before Assembling Carafe

▲ CAUTION: Always handle the Glass Carafe with care to avoid breakage and possible injury.

▲ Discontinue use of the Carafe if it is cracked or chipped. Ordinary imperfections in the glass such as scratches, marks, bubbles or blemishes, are completely normal and not a cause for concern.

▲ Broken glass should be carefully collected and placed into a rigid box or container so it can be handled and disposed of properly without injury.

▲ Follow Assembly Instructions accurately to ensure safety. An improperly assembled glass Carafe could cause damage to it or result in personal injury.

▲ Place a towel on the table surface underneath the Carafe to prevent sliding or damage during assembly or while cleaning.

▲ When using Carafe, use both hands for proper support.

▲ When setting Carafe on any hard surface, (especially when full), take care to rest it gently on the surface to avoid damage.

CARAFE ASSEMBLY INSTRUCTIONS

Only tool required: Phillips, (Cross-Head) Screwdriver, (not included)

Note: Please use caution when handling the glass Carafe.



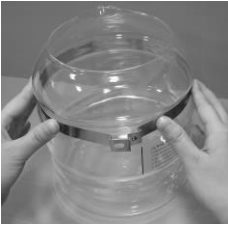
1. Remove the top of the water distiller, (Head Assembly), and remove the package inside. **Carefully** pull out the glass Carafe.



2. Open the package and locate all parts as specified below:
Handle; Handle Cover; Lid; Nozzle with Glass Insert; Glass Carafe;
2-Stainless Steel Straps & 2 Phillips, (cross-head), Screws



3. Remove the screws and peel off the blue protective film on the Stainless Steel Straps.

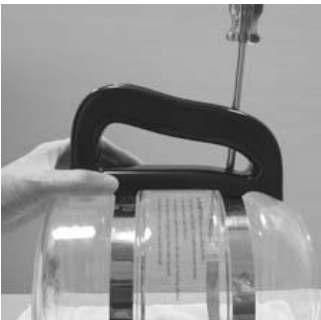
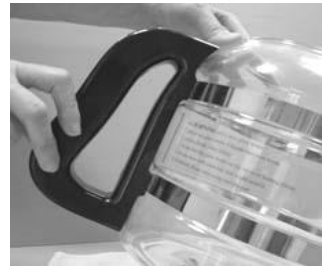


4. Place a towel or soft cloth on the work surface to protect the glass Carafe. There are two indentations on the Carafe body. Wrap one strap around the Carafe, placing it in the indentation. Position the strap so that the cap nut is facing towards the Carafe. Snap the other end with screw slot over the cap nut. (See above.) Do the same for the other strap. The cap nut orientation must be the same for both straps.



5. Align right-hand side of the screw slots to the black reference line on the Carafe label.

6. Fit the handle over the two screw slots. Align the Handle with the slots and the black reference line to the right.



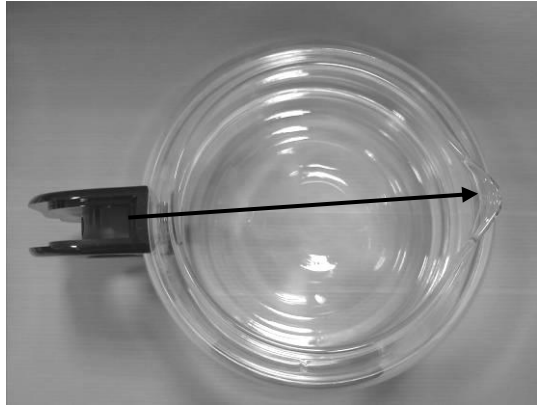
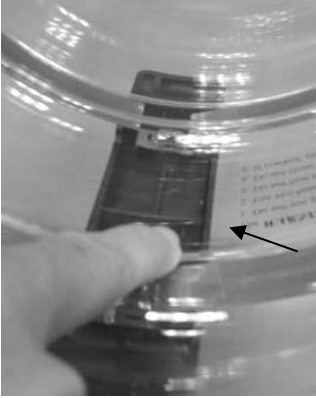
7. Insert the upper screw first. Using a Phillips, (cross-head), screwdriver, turn the screw so that it holds, but do not tighten all the way yet.

8. Insert the lower screw next and turn so

that it holds but do not tighten yet. Move the Handle to the right a little so that the black reference line is just covered evenly and straight by the Handle edge.



9. Tighten both screws while making sure the Handle is vertically aligned with the black reference line. Do not use excessive force.



10. Place the Carafe right side up. Viewed from inside, check to see that the Handle is aligned to the black reference line. When done correctly, the Handle will also be aligned with the spout on the opposite end. If necessary, loosen the screws and re-adjust.

11. Lift the Carafe by the handle a few inches above table surface and GENTLY shake the Carafe to verify that the handle is securely attached. Tighten the screws more if the handle feels loose.



12. Clip the Handle Cover onto the Handle. Push it all the way in.



13. Place the lid on the Carafe with the opening facing the Carafe spout. The Carafe is now ready to use.



Always handle the glass Carafe carefully and set it GENTLY on hard surfaces as it is breakable.

Since the Carafe weighs approx. 9 lbs. when full, it should be lifted and carried with both hands. One hand should be holding the handle and the other hand supporting the bottom of the Carafe. An easy way to pour from a full Carafe is to allow it to rest on the countertop, (thereby supporting the weight), while tilting it to fill a drinking glass, etc.



INSTRUCTIONS BEFORE FIRST USE

1. Locate the unit on a flat, sturdy, heat tolerant surface. Keep the unit in a well ventilated area away from other heat sources so that the cooling fan will operate efficiently.

2. Wash the Carafe prior to using with a couple drops of dish soap and warm water. Rinse thoroughly and dry.

3. Wash the Boiling Chamber using a couple drops of dish soap and a little warm water. Swab the interior of the Boiling Chamber with a regular soft sponge and then rinse and dry well. Never use abrasive detergent cleaners, metal brushes or metal scouring pads. And to protect the electrical components, never submerge the Main Body or Head Assembly in water.

When using the appliance for the first time, it is possible that some harmless material may remain from manufacturing, packaging or shipping. This could leave an unwanted taste or scent in the purified water. For this reason it is not recommended that water from the first cycle be consumed. However it may be used to rinse the Activated Carbon Pod to use for the second cycle, or for pets, watering plants, for steam irons or in humidifiers, etc. or may be discarded. (*Do not use the Activated Carbon Pod during the 1st cycle.*)

OPERATING INSTRUCTIONS

Follow these simple steps to ensure that you maintain a continuous supply of drinking water. It only takes a couple minutes to prepare the unit to begin the distillation process.

Do not plug in to household electrical outlet until the unit is full, outside is dry and unit is completely assembled.

1. Using a pitcher or directly from your sink faucet/sprayer hose, fill the Boiling Chamber with tap water up to the internal fill line, (approx. 2 inches, (2.5 cm), from the top. Note: When filling, do not let the water run unattended to prevent spillover which could allow water to get in to the electrical components at the base of the unit.

2. Position unit on dry countertop and dry off any moisture on the exterior of the unit. **While all cords are unplugged**, also make sure the plugs and sockets are dry.

3. Position and seat the Head Assembly onto the Main Body while lining up the Fan Cord with the Fan Cord Socket. Insert the Fan Cord Plug into the Fan Cord Socket **firmly until it has completely seated. IMPT: Push Fan Cord plug in with force so white line is not visible.**

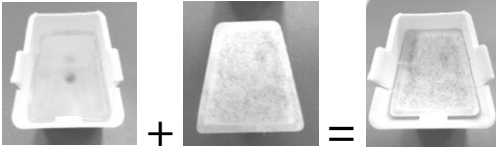


INCORRECT

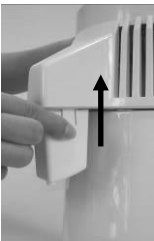


CORRECT

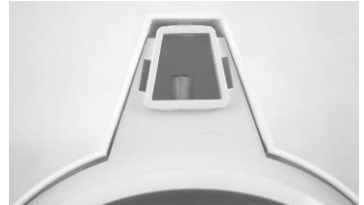
4. When a new Activated Carbon Pod is to be used for the first time, dip it in a cup of distilled water several times to remove the dust. *The activated carbon, (charcoal made from coconut shells), is harmless.*



To install the Activated Carbon Pod, simply drop it into the Nozzle.



5. Carefully press and insert the 2 raised edges of the Nozzle into the 2 slots under the Distiller Water Outlet being careful not to break the Glass Insert. Note: See “Maintenance” section for additional Activated Carbon Pod and Glass Insert instructions.



6. Line up the Nozzle with the spout of the glass Carafe to collect the distilled water. Position the Carafe accurately so that the water will not drip on the side of the Carafe or onto the countertop.



7. Plug the Main Power Cord in to the Main Power Socket on the unit **FIRST**. And then plug the Main Power Cord into your household electrical outlet **LAST**. Flip the main power switch on the socket to on, (“I”). You are now ready to begin making water!

8. Press the Reset Button to begin the cycle. The unit will automatically shut off after the process has completed. Enjoy your PURE WATER!

PURE WATER, (like all good things), takes time.

You've heard of Instant Coffee and Instant Tea. It might do if you are in a hurry, but it just won't be as good as if it were freshly brewed.

Regular filtered water can be compared to "instant water" in that you don't have to wait for it to be made. The water is simply discharged after running through a course, (and very ineffective), filtering material. Sometimes the filtering material can become contaminated and produce water that is even WORSE than it was BEFORE it was filtered!

Unlike filtered water that has been "around the block" many times, and is actually the same old water being used over and over again, distilled water is BRAND NEW and FRESH every time it is made!

Just as in Nature, it takes a little time and patience to make brand new water. It has to evaporate and then condense back into liquid again in the form of rain or distilled water. Because distilled water must be converted to steam vapor and then condensed back into pure water, distillation of a full 4 Litres can take approximately 5 to 6 hours.

Put your distiller on the 'night shift'

To avoid having to wait for your water to be made, or from running out of pure water during the day, just push the button on your unit before retiring each night so it will make 4 Litres for you overnight. *(Please be sure that your carafe is properly positioned to collect the water.)* Since your system turns off automatically, you don't have to be awake to do anything. While you sleep, it can be busy making pure water for you.

Then, when you wake up each day, you will have a full 4 Litres of the PUREST water possible, waiting for you to use each morning and have plenty to enjoy all day. *(If you use more than 4 Litres per day, then by all means, run it again during the day before you run out.)*

Water this PURE is worth waiting for! But you can avoid waiting, by making it overnight.

BREAK-IN PERIOD

Due to the brand new stainless steel in the boiling tank, you may perceive a very slight “new smell” or faint taste from the first couple cycles or so. However, the water is completely pure and safe to consume. Any residual scent or taste dissipates with each use until the water becomes completely odorless and tasteless.

Unlike water filters that begin deteriorating with the very first use, and continue to get worse as additional water is filtered, pure water made with H2oLabs systems just gets BETTER and BETTER with each cycle.

To expedite the break-in process, it is recommended to clean the boiling tank after each use with a Scotch-Brite™ or similar NON-METAL scouring pad, using plain white distilled vinegar or a couple drops of dish washing-up liquid and warm water. Cleaning in this manner will produce a slight “polishing” effect on the interior of the boiling tank to reduce any surface coarseness. A couple minutes is all it takes to clean and prepare the unit for the next cycle. (See “Cleaning Instructions”.)

As the unit is cleaned after each cycle, the stainless steel will lose the ability to retain any new smell or taste. After the first few cycles there should be hardly any taste at all and in fact at that point it will “taste” better than any other filtered or bottled water.

CLEANING INSTRUCTIONS

Clean the inside of the boiling tank after each cycle has ended and the unit has cooled for at least 30 minutes.

1. Remove Carafe from the Main Unit and empty into a pitcher or other storage container, (and/or directly into your coffee/tea maker), for use.
2. Unplug the Main Power Cord from your household outlet FIRST and then from the unit.
3. Unplug the Fan Power Cord from the Fan Power Cord Socket and remove Head Assembly from the Main Unit.

4. Wipe inside of Head Assembly Dome and the Rubber Ring Seal to remove any moisture or residue. Do not remove the Ring Seal in order to clean and dry it. Simple wipe it with a clean towel.
5. Rinse out the inside of the Boiling Chamber and use a sponge (Scotch-Brite™ or similar NON-METAL pads may also be used), to remove any left over residue from the inside bottom, and rinse again. **Never submerge the unit in water.** (Try to keep the outside of the unit dry while cleaning.) If scale remains, pour in approx. one-half cup of plain white distilled vinegar and let set for an hour or so as needed and then loosen with a sponge, (or Scotch-Brite™, etc.), and rinse out. Difficult residue may require periodic use of a safe water scale cleaner such as that supplied with the unit or available at H2oLabs.co.uk.
6. Fill the unit after cleaning in order to prepare for the next cycle.
7. Place unit on the counter-top and dry the exterior with a soft cloth after each cleaning and filling to prevent water or rust spots. Also insure that the Fan Plug and both outlet sockets on the Main Body are dry.
8. Position Head on the Body and **plug the Fan Cord firmly until it has completely seated** into it's outlet on the unit. Plug the Main Power Cord into the unit and then into the household outlet. Position Carafe and press the Reset Button when you are ready to begin the next cycle.

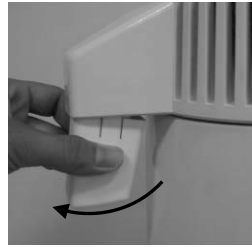
MAINTENANCE

Never use abrasive cleaners, wire brushes or metal scouring pads which can damage the surface of the Boiling Chamber or the exterior. However, Scotch-Brite™ or similar NON-METAL pads may be used for the INTERIOR surface.

The Boiling Chamber has normal “welding spots” at the bottom that are sometimes visible. You should not attempt to remove them.

To maintain maximum efficiency, whenever heavy dust accumulation is apparent on the condensing coil in the top of the unit, vacuum or blow out with air pressure, through the slots in the cover.

The Activated Carbon Pod helps to reduce any noticeable taste or residual gases. Replace the Activated Carbon Pod every 30 to 60 days, or whenever there is any noticeable taste or odor.



To replace the Pod, press the middle tabs on each side of the nozzle and **TILT** it out of the slots. (See illustration.) **Use force if necessary.**

Press the tabs carefully to prevent breaking the Glass Insert. (Should the Glass Insert break, replacements are available. However it is perfectly acceptable to continue using the distiller without the Glass Insert as the Nozzle is made from food-grade, safe material.)

It may be helpful to use small flat head screwdriver to push the Nozzle tabs in to release them from the slots. If using a screwdriver, be careful not to enlarge or damage the slots.

It is normally not necessary to clean the Glass Insert until changing the Activated Carbon Pod. When necessary to remove it, take care to prevent breakage. Gently press top of Nozzle and insert a small flat-tipped screw driver under the release tab to slide the Glass Insert out.



TIPS

As mentioned previously, **Run your system at night** - Prepare the unit at any convenient time during the day. But wait until before retiring each night to turn it on. That way, any noticeable noise or heat from the process will be minimized. More importantly, the unit will have ample time to cool down by morning which will make it quicker, easier and safer to clean and prepare for the next cycle. Plus you'll have a fresh and full 4 Litres first thing in the morning to enjoy all day.

TIPS (Continued)

Get a large refrigerator storage container with a dispensing valve for easy access. When it gets about half empty, it's time to make another 4 Litres. This way, you'll always have a reserve supply handy.

Distilled water is also great for coffee, tea, cocoa and frozen fruit juices; ice cubes, cooking and low sodium diets; watering plants or sprouts; pets and aquariums; or anything requiring distilled water like steam irons or other steam appliances and automotive batteries.

TROUBLE SHOOTING (Visit www.H2oLabs.co.uk for additional Trouble Shooting Guidance.)

Fan does not come on or unit is not making any water:

- Fan power cord **not plugged firmly** into the bottom socket of the unit. Use extra force to push the fan cord plug into the fan cord socket.
- Main power cord not plugged firmly into the household outlet or unit.
- No power to the household electrical outlet.
- Power/Reset button not pressed.

Not making a full 4 Litres of water:

- Water was not filled to the mark inside boiling chamber.
- Steam or water leaking. See below.

Steam or water leaking:

- Fan power cord **not plugged firmly** into the bottom of the unit.
- Head Assembly, (top of the unit), not seated securely on the Main Body, (bottom of the unit).
- Rubber Ring Seal, (attached to bottom of Head Assembly), not seated properly, (or if removed, reinstalled upside down).
- Carafe and/or Nozzle not positioned properly under the water outlet spout.
- Activated Carbon Pod not properly positioned in the Nozzle and/or plugging Nozzle outlet.

Attention Dental Offices: It is not recommended to use the activated carbon pods when making distilled water for autoclave use.

Model 300SSF
SPECIFICATIONS:

Size: 20 cm Width, x 36 cm Height;
Weight: 3.5 kg;
Capacities: Boiling Chamber: 4 Litres;
Carafe: 4 Litres;
Water Output: 4 Litres per 5 hrs. (Approx.)
Up to 16 Litres; distilled water per day;
Power Source: AC 230V 50/60Hz;
Consumption: 580W (Total)



The H2oLabs Countertop Water Distillation System
will provide your household with **THE PUREST WATER**
POSSIBLE and it's made fresh every day to taste great.

To order Activated Carbon Pods, Cleaning Crystals,
Parts and Accessories, or for information on High Capacity
Automatic Units and other helpful products or information ...

Visit www.H2oLabs.co.uk
or Call 0845 519 0265
(Monday through Friday 8:00 AM to 5:00 PM.)